

ACTIVE CHILLED BEAMS

ACB40 (2 WAY)

ACB50 (1 WAY)

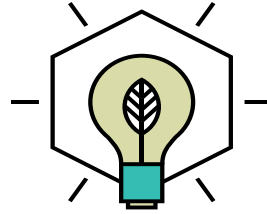


DADANCO

feel the difference™



BUILT ON INNOVATION



THE HIGH PERFORMANCE ACB40 and ACB50 Active Chilled Beam models offer the highest cooling and heating performance. The ACB40/50 have significant performance advantages which often result in less beams required while providing the engineer with a high degree of design flexibility in positioning the beams.

PRODUCT DATA AND PERFORMANCE

Primary Airflow is 15-250 CFM

Performance Range 2,000-10,000 BTUH/LF.

Discharge ACB40 is 1-way and ACB50 is 2-way

Coil horizontal coil, 2 or 4 pipe option

Primary air connection side or top entry as standard

Sizes up to 10ft in 1ft increments

COMMON APPLICATIONS

DADANCO Active Chilled Beams are designed to fit into a standard 24"x24" ceiling grid system and ideally suited to high load applications such as Universities, Office space, laboratories, hospitals and Hotels.





PERFORMANCE CHARACTERISTICS

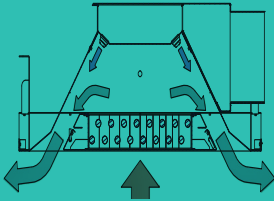
MODEL	SIZE		TYPICAL CAPACITY		Primary Airflow (CFM)	SOUND LEVEL
	Width	Height	Cooling (BTUH)	Heating (BTUH)		
ACB40	24"	9.6"	2,000 - 10,000	12,000	15 - 250	NC15-NC40
ACB50	24"	9.6"	1,500 - 9,000	11,000	15 - 130	NC15-NC40



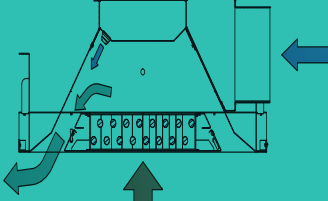
**CEILING MOUNTED ACB CASSETTES
(HORIZONTAL COILS)**

These horizontal units are designed to fit into a standard 24"x24" ceiling grid system. These units are available in lengths up to 10 feet in 1-foot increments. The ACB40 is a two-way discharge while the ACB50 is a one-way discharge. The ACB40L is an ultra-low height model with an overall height of less than 7".

ACB40



ACB50



ACB 40 / 50



The Luxton-Reed Center
47 Westfield Industrial Park Road
Westfield, Massachusetts 01085

(413) 564-5657
info@dadanco.com

 Dadanco

 DadancoHVAC

 Dadanco

WWW.DADANCO.COM

